



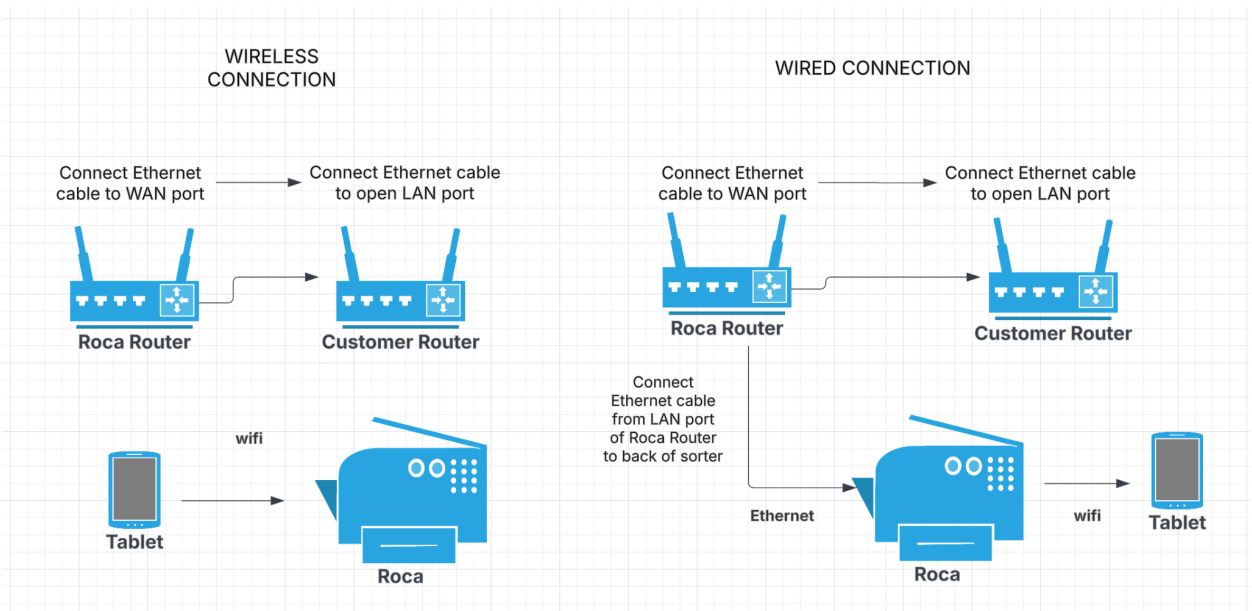
Quick Setup Guide

Materials

1. Roca Router
2. Blue and silver pneumatic tube
3. Blue Pump power cable
4. 2 Black antennas
5. Red Emergency stop button
6. Piston
7. Input Tray
8. Sorter power cord
9. Tablet
10. 5 Green Divider cards (Magic the Gathering & Pokemon) or 5 Blue cards (YuGiOh!)

Set Up Steps

1. Connect your router/modem to the Roca router's WAN port and power on.



2. There is a clear plastic bag marked "Set Up" which contains blue and silver pneumatic tubes. Use these to connect the pump to Roca sorter by securing the

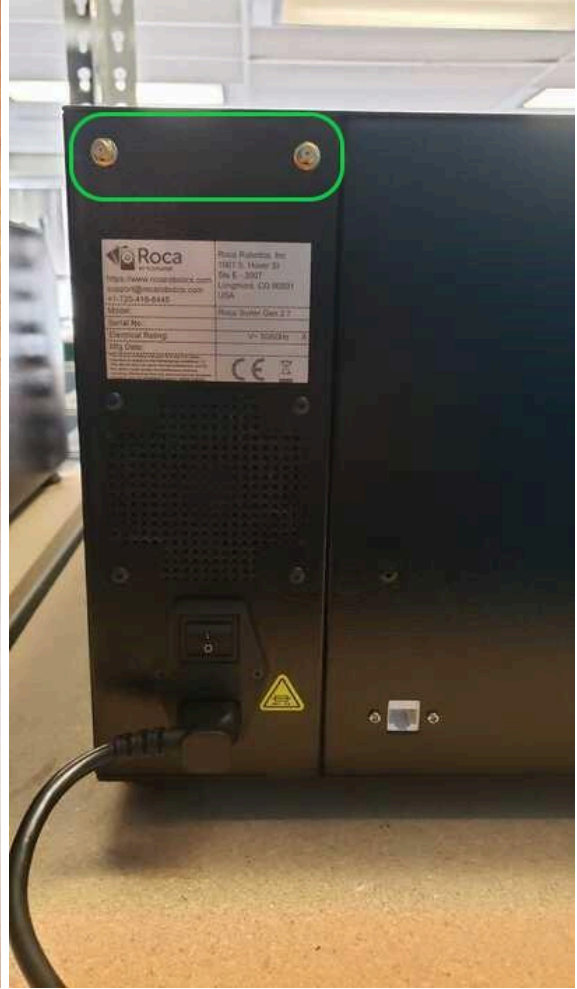
blue tubing to the corresponding blue connectors on the back of the machine and the silver tubing to the corresponding silver connectors.



3. Connect the sorter power cable from the pump to the sorter.



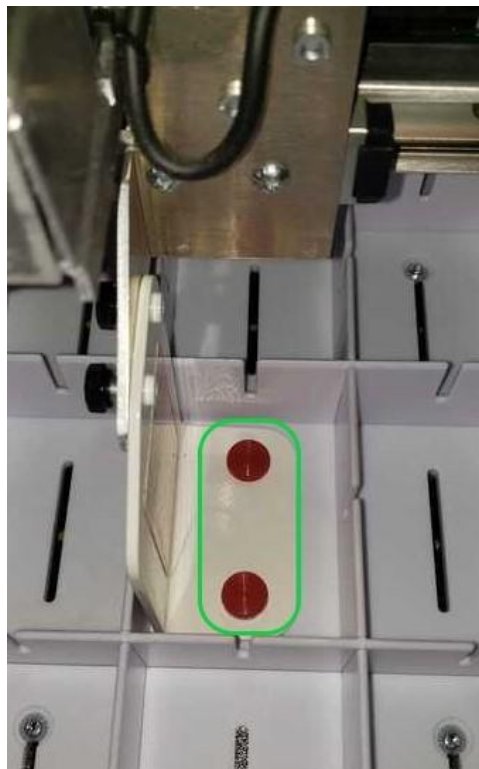
4. Connect black antennas to gold connectors on the back right of the Roca sorter.



5. Attach the red plastic button to the emergency stop on the front of the Roca sorter by rotating clockwise. Test by pushing in to engage and turn clockwise to release.



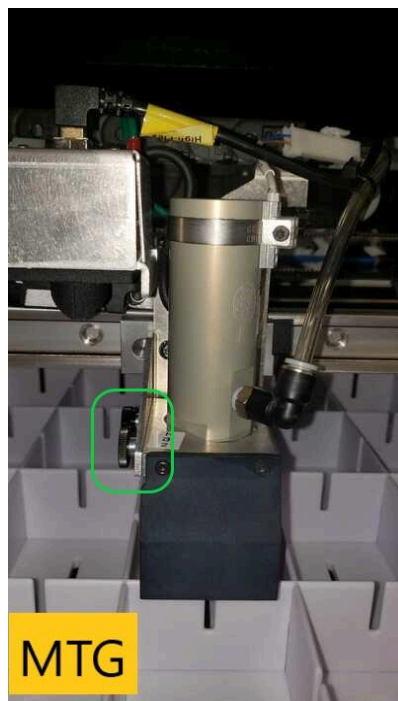
6. Open the lid of the Roca sorter and find an L shaped white metal placeholder in the center of the white sorting bins which lock down the gantry. Remove the red screws (can easily be done by hand) and save for future use (store with your packaging in case you need to move your device).



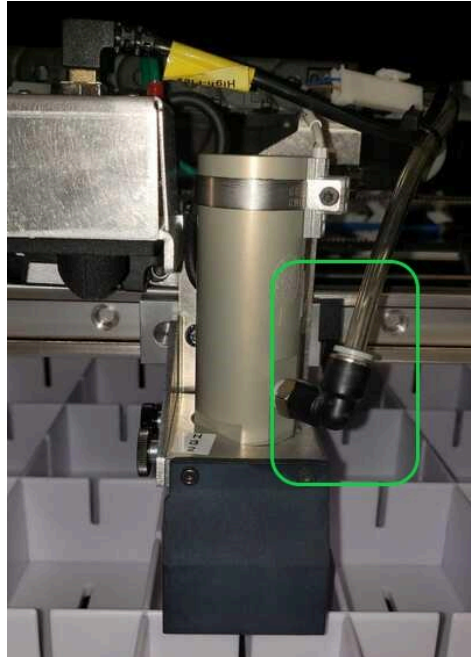
7. Remove the black screws (can easily be done by hand) on the top left of the Locking Device and keep them with you as they will be used to connect the piston.



8. Find the piston (in small brown cardboard box) and remove the blue tape from the piston.
9. Use the black screws to connect the piston to the gantry with the suction cup facing down towards the bins. Secure as hand tight as possible.
 - a. **For MTG/Pokemon/Lorcana Sorter**, the piston will fit on the right side of the metal bar.



- b. **For YuGiOh!**, the piston will fit on the left side of the metal bar.
10. Connect the clear pneumatic tubing to the silver connector on the piston. Then connect the white cable from the piston to the white cable coming out of the gantry.



11. Insert the INPUT tray
12. **Calibration:** Place one card face up into each sorting bin (not the input tray bins), there should be 45 cards in total
13. Close lid of Roca Sorter
14. Plug in the power cord and turn on the power switch on the back of the sorter.
You should hear the fan at this point.



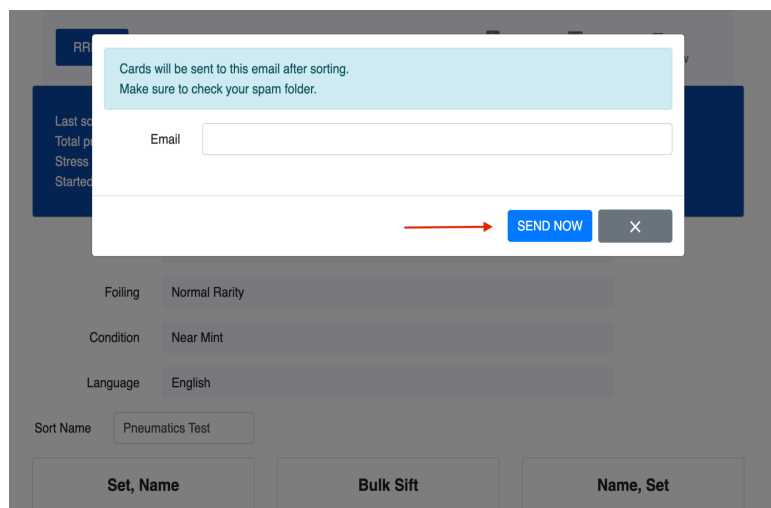
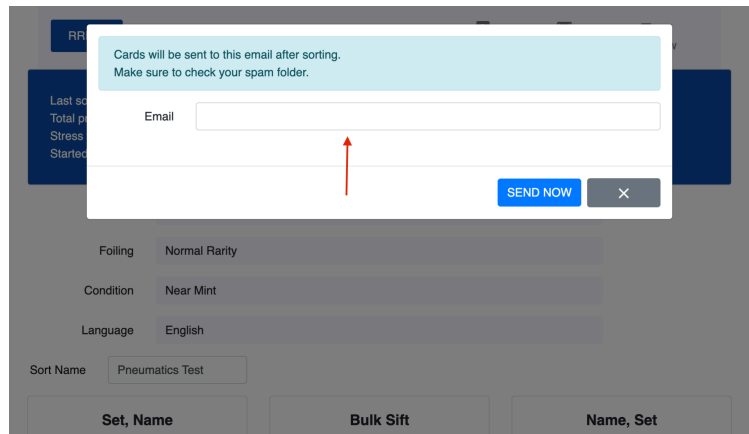
15. Turn on the sorter using the front silver button. The button should turn blue and the bright LED's in the machine should turn on.



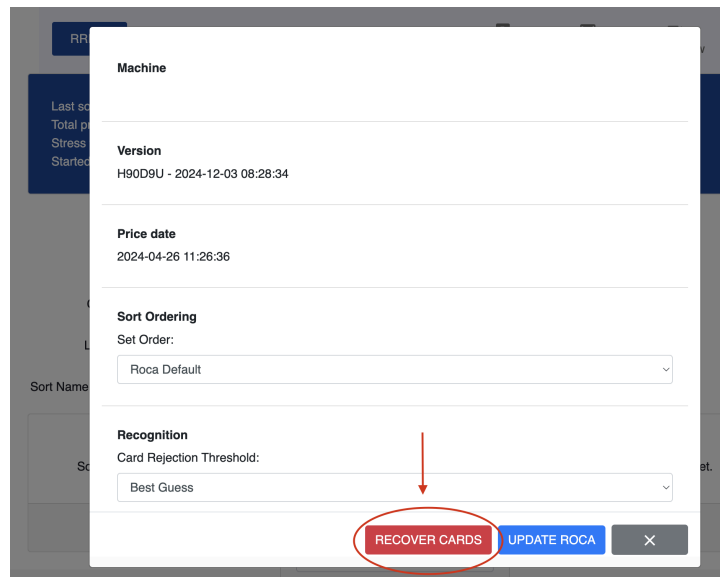
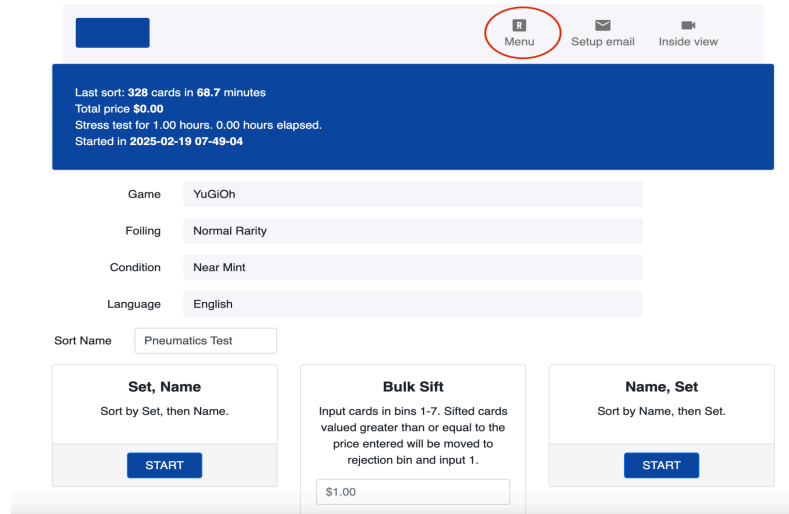
16. On the Roca Tablet, find the Roca app at the bottom of the screen and tap. This will connect the tablet to the machine. Note: a few refreshes may be needed to connect.



17. At the top of the app menu, select "Setup Email" and enter the email address to which you prefer to receive your CSV (Please check your email and confirm receipt of the test email)



18. From Menu, hit the red "Recover Cards" option to start the calibration test.



19. Once card recovery is completed successfully, the machine should be ready to update.
20. Read the attached Operator Overview for information on the various sorting and sifting algorithms, maintenance requirements, common error messages and certain limitations.

Important: Make sure you update the sorter after you have finished your calibration. The app will not provide much feedback during this step which can take up to 15 minutes. Once the update is complete, you are ready to start sorting!

Go-Live Sync: Once your sorter is set up, please feel free to schedule time with your account manager to run through any questions you might have as well as a quick review of best practices. You can schedule [here](#).

Support: If you encounter any challenges during your install and set up, please feel free to reach out via the “get support” button in your Roca App or by emailing supportdesk@rocarobotics.com.